

The Pertelian Pole Display Installation Guide

V 1.3

ForeSight Systems LLC

General Requirements

- Windows 98, Windows 2000, Windows XP (x86, x64), Windows Vista (x86, x64)
- [DHPOS Point of Sale/Cash Register Program](#)
- USB 1.0+ port
- Free Hard Drive Space 10 MB

Installation

We have made getting your Pertelian Pole Display as easy and quick to setup as possible. Although it seems like there are lots of steps to get started, we've split the process into many steps in order to help ensure no one gets lost. Plenty of screen shots have been added, giving the installation guide a "follow along" feel to it.

We currently support most major commercial versions of Windows. The program SetupPertelianPole.exe will detect which version of Windows you are running and install the appropriate drivers. In order to make installation as easy as possible, we provide step by step instructions using Windows XP as the base for images for installation under Windows 2000, XP and Vista. Step by step instructions complete with screenshots are also offered for Windows 98.

This installation guide is split into 3 sections. Section 1 goes over the steps for installing Pertelian Pole on Windows 2000, XP, and Vista. Section 2 goes over the steps for installing the Pertelian Pole Display on Windows 98. Section 3 takes you through the final steps to run the Pertelian Pole.

Section 1: Installation Guide for Pertelian POS (Windows)

Follow step 1 if you do not currently have DHPOS installed on your system.



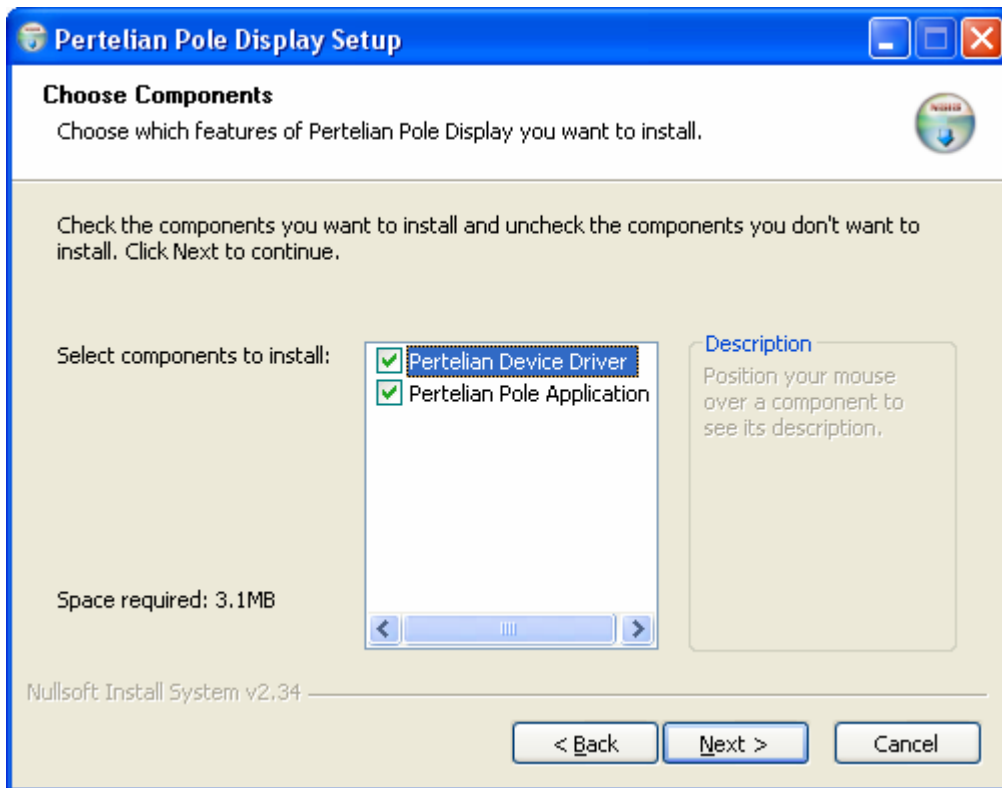
Pos639g.zip

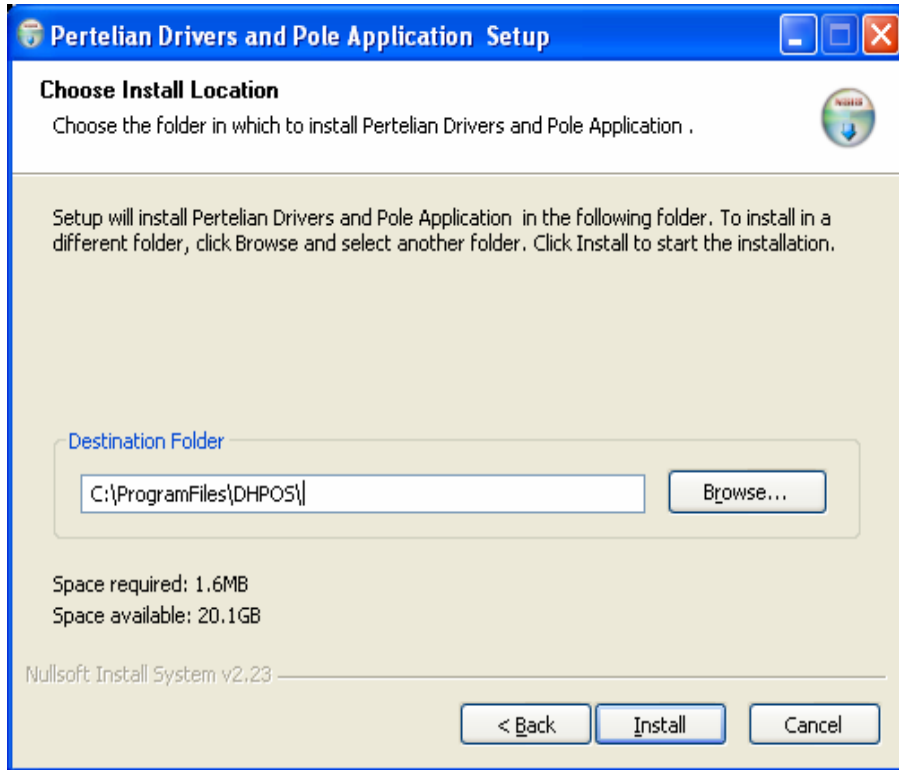
1. Download and unzip Dale Harris's main POS software (POS???.ZIP) into a folder of your choosing. (Detailed instructions are here <http://pages.prodigy.net/daleharris/upgrade.htm>)

Example:

2. Make sure the Pertelian LCD is plugged into the USB port. You should see two solid lines across lines 1 and 3.

3. If you have never installed Pertelian before, you will need to install both the Pertelian device driver and the Pertelian Pole Application.





4. Download and run SetupPertelianPole.exe, **make sure you select the folder in which you unzipped the POS???.EXE file**. This will extract the Pertelian files into the main POS software and allow Pertelian to act as a pole display. In this example, we have the DHPOS software installed in the following folder, **C:\ProgramFiles\DHPOS** so that's our Destination Folder for SetupPertelianPole.exe. If you don't have the Pertelian Pole application, download it here: <http://pertelian.com/downloads/SetupPertelianPole.exe>.

Section 2: Installation Guide for Pertelian POS (Windows98)

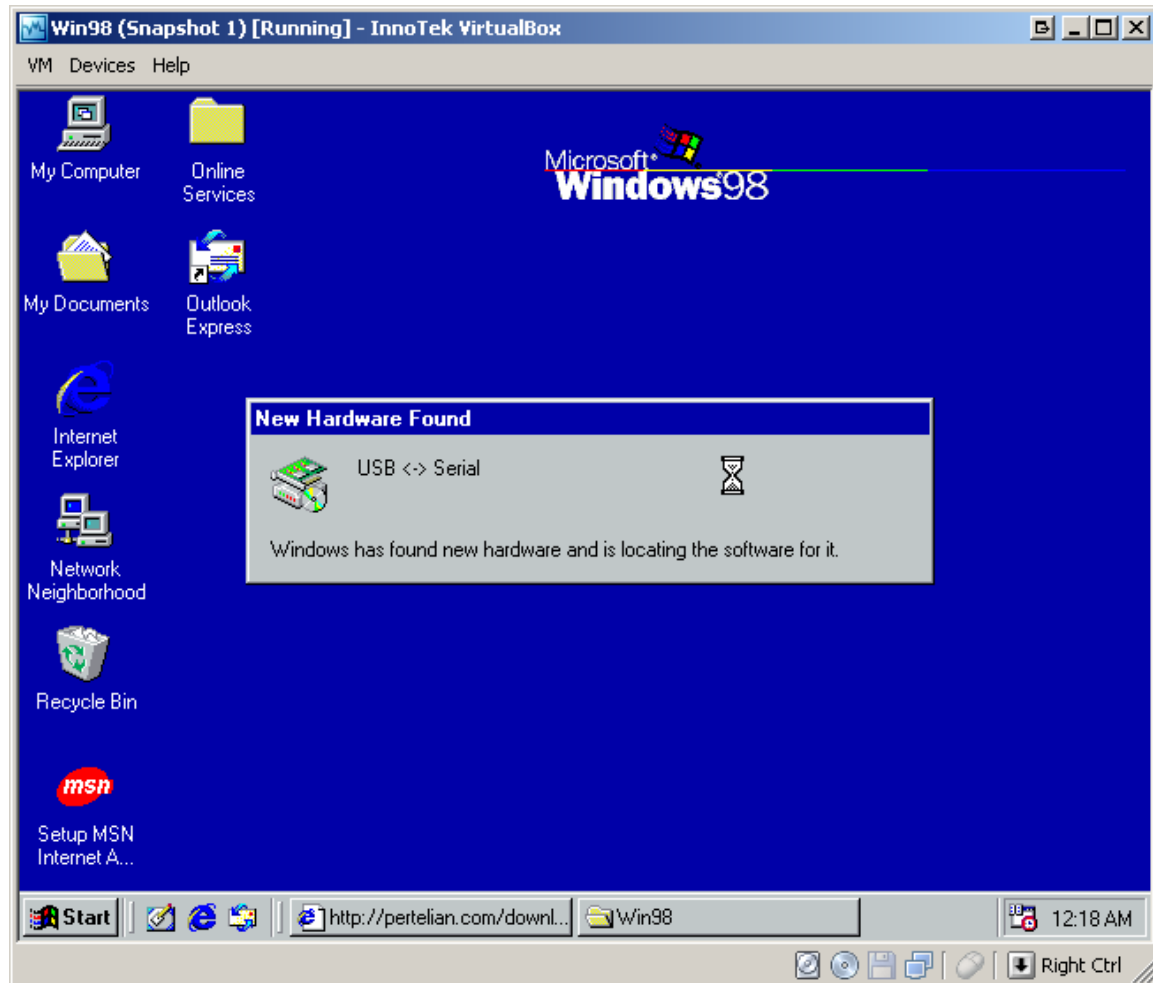
Follow step 1 if you do not currently have DHPOS installed on your system.

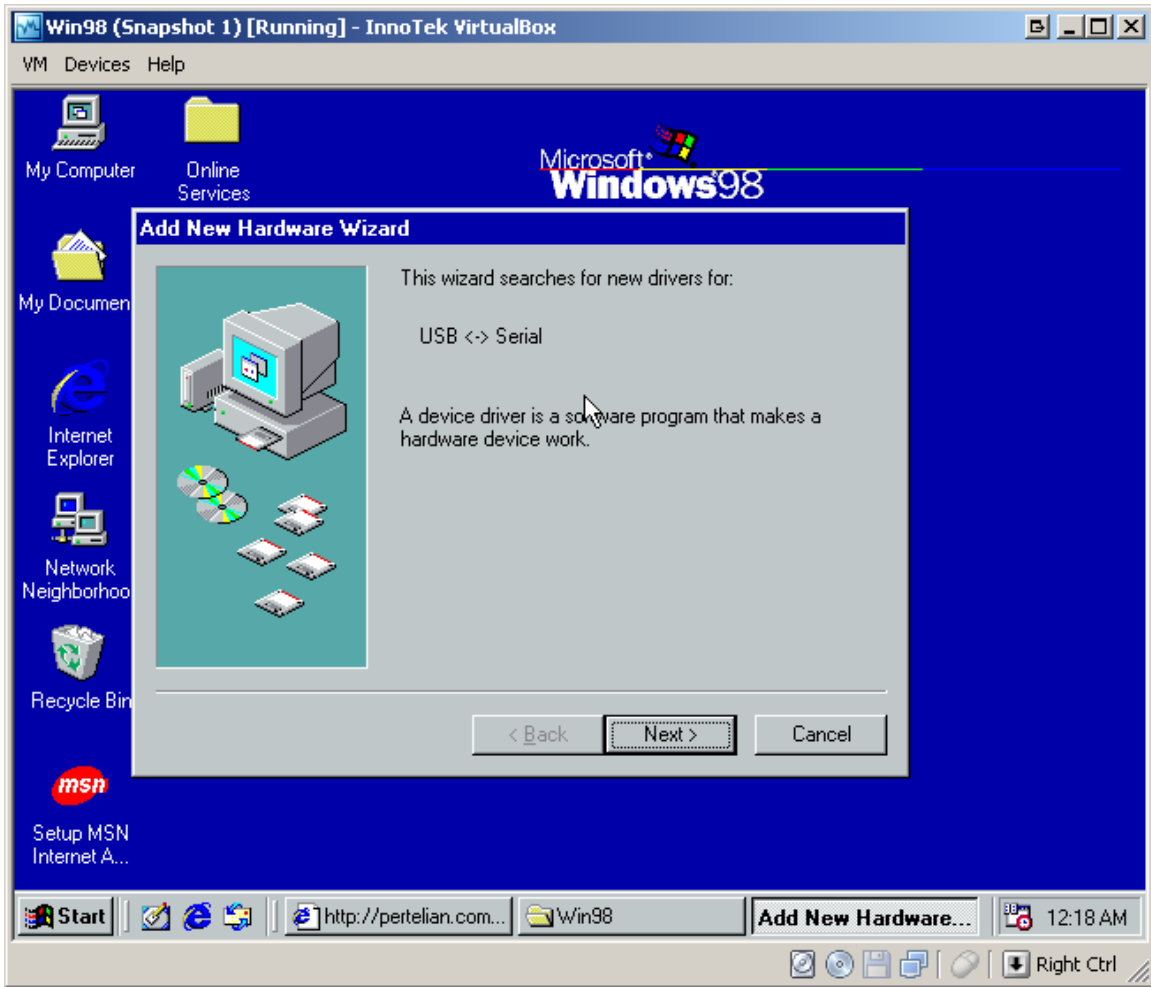


1. Download and unzip Dale Harris's main POS software (POS???.ZIP) into a folder of your choosing. (Detailed instructions are here <http://pages.prodigy.net/daleharris/upgrade.htm>)

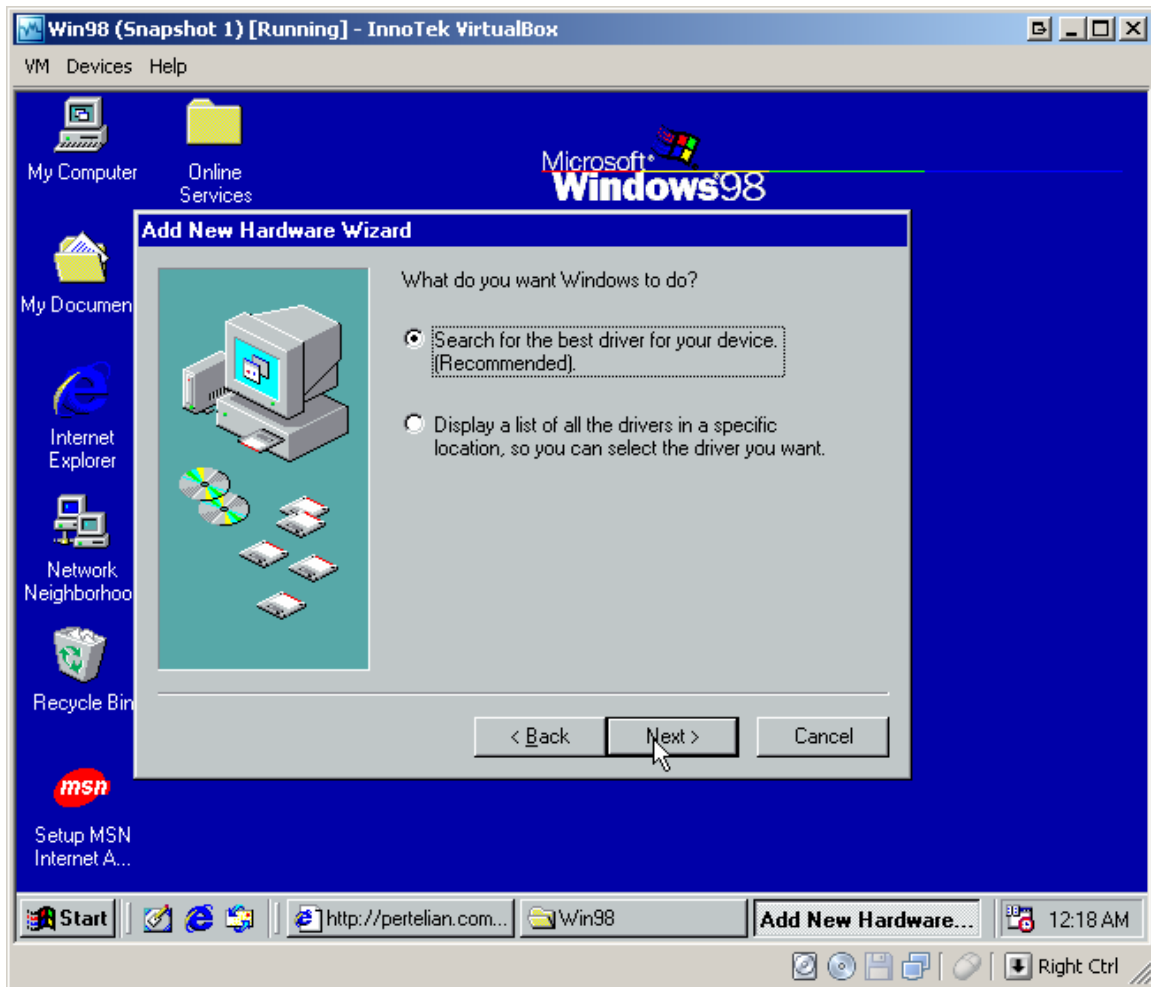
2. Download and run SetupPertelianPole.exe, make sure you select the folder in which you unzipped the POS???.EXE file. This will extract the Pertelian files into the main POS software and allow Pertelian to act as a pole display. In this example, we have the DHPOS software installed in the following folder, C:\cashreg\ so that's our Destination Folder for SetupPertelianPole.exe. If you don't have the Pertelian Pole application, download it here: <http://pertelian.com/downloads/SetupPertelianPole.exe>.

3. Insert the USB cable into the USB port and wait for the new hardware to be detected.

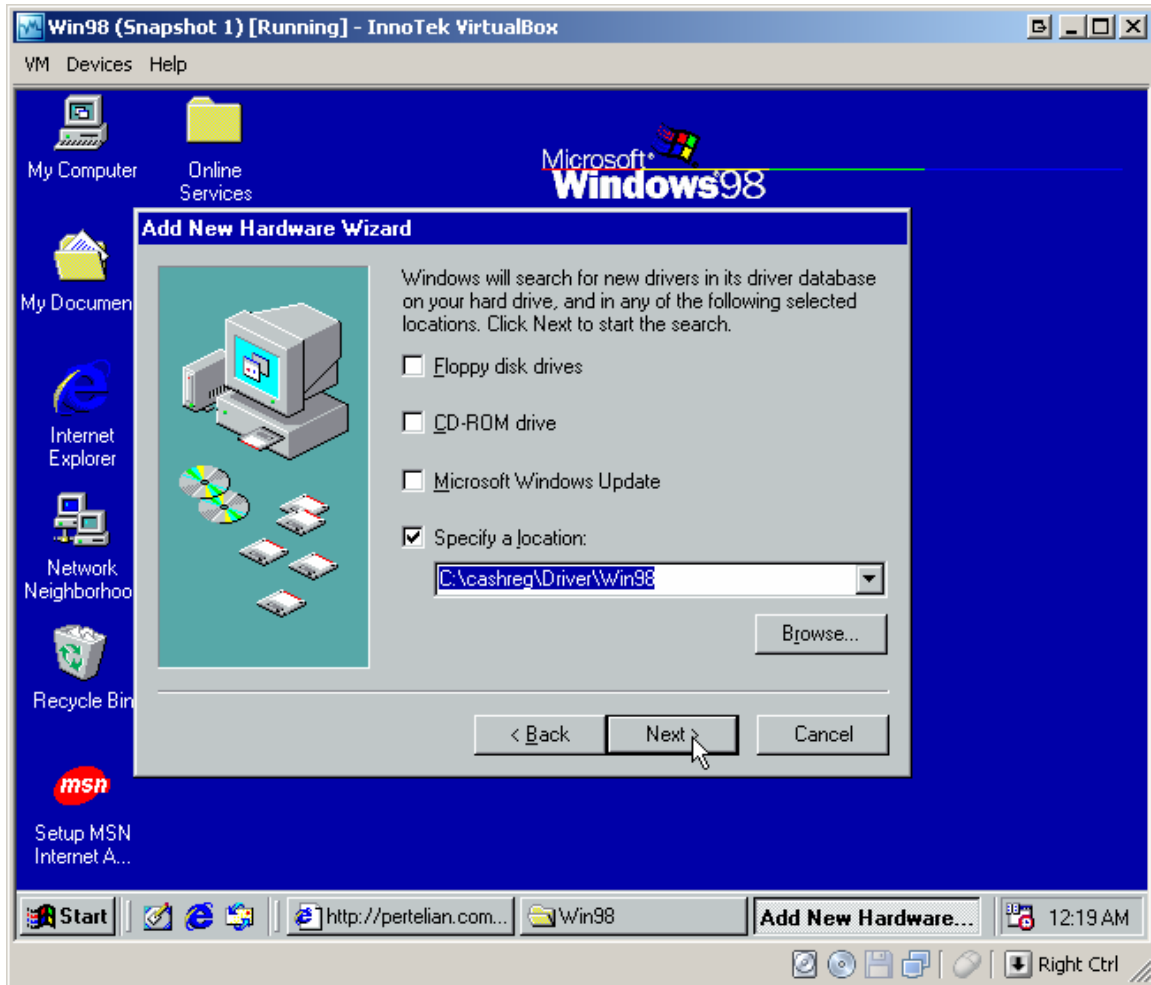




4. Click Next



5. Select "Search for the best driver for your device (Recommended)" and click Next.



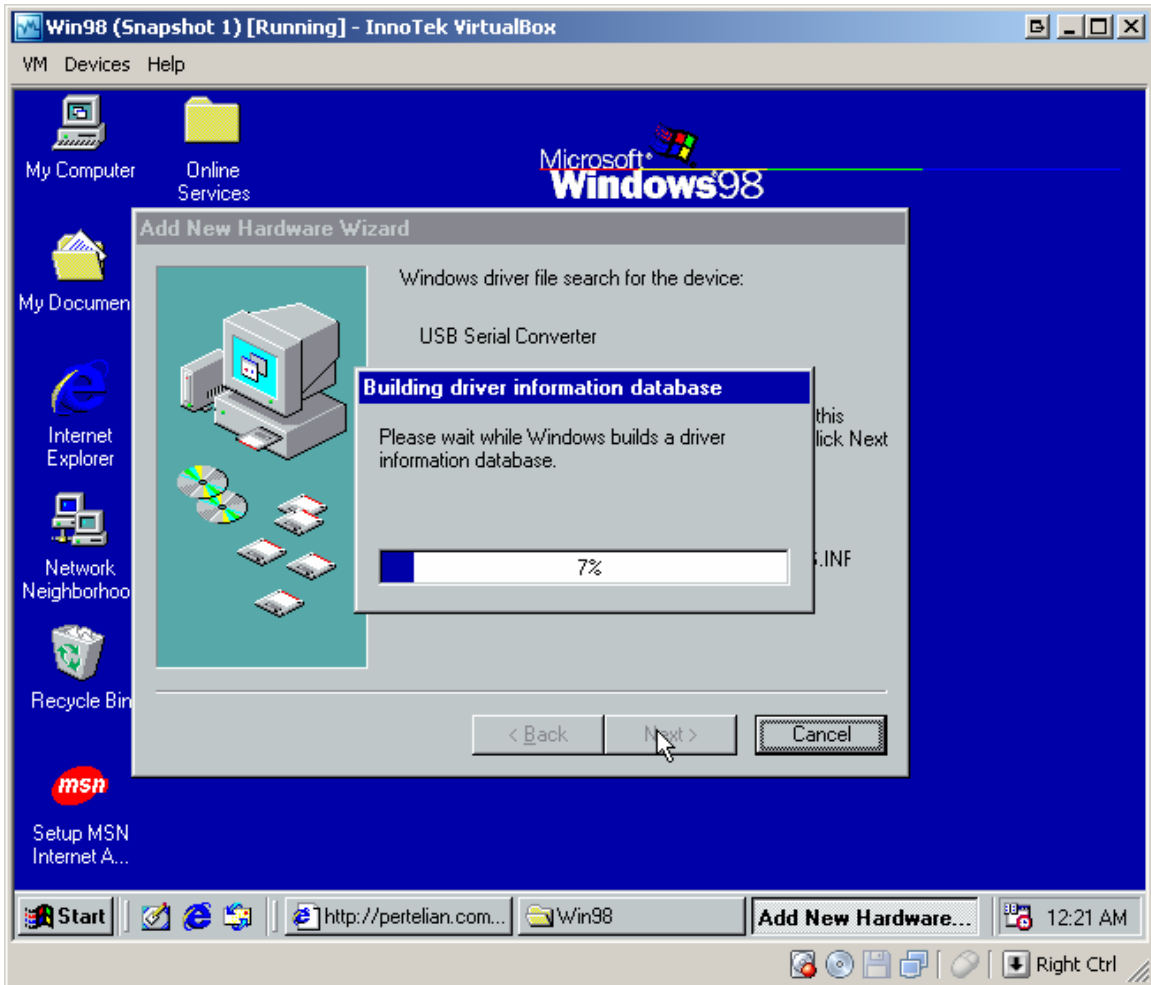
6. Click "Specify a location" and type or Browse to the directory of where the driver is located. The driver was extracted when you ran PertelianPoleSetup.exe in Step 2 and thus should be included in your main DHPOS folder.

For example, we installed DHPOS and PertelianPole in C:\cashreg, in our case, the driver would be in C:\cashreg\Driver\Win98

7. Click Next.



8. Click Next

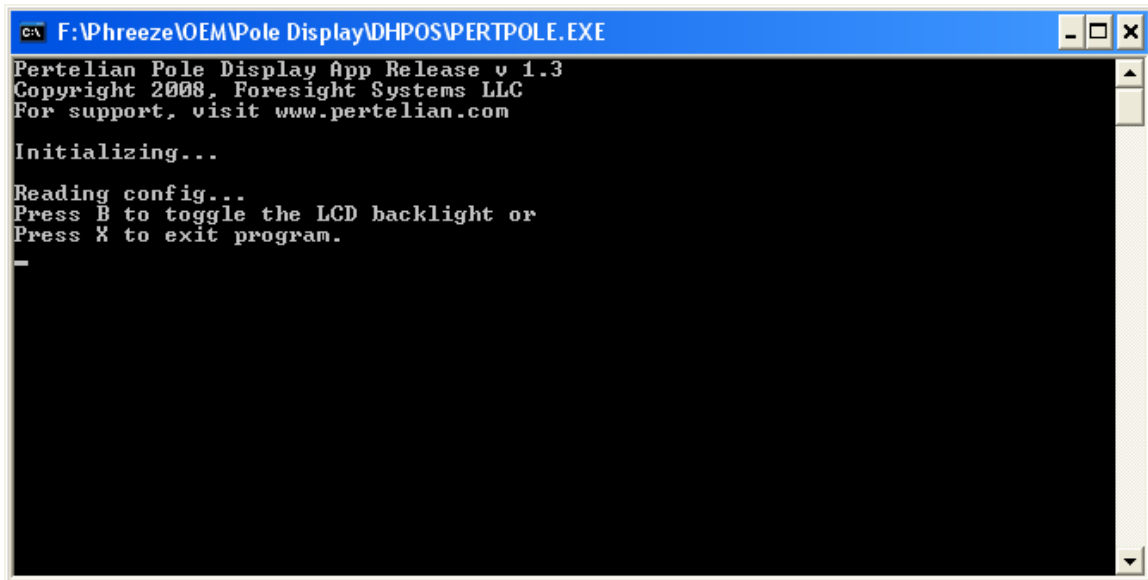


You will see Windows install the appropriate driver. Please wait until this is completed.



9. Click Finish.

Section 3: Running the Pertelian Pole Display



```
F:\Phreeze\OEM\Pole Display\DHPOS\PERTPOLE.EXE
Pertelian Pole Display App Release v 1.3
Copyright 2008, Foresight Systems LLC
For support, visit www.pertelian.com
Initializing...
Reading config...
Press B to toggle the LCD backlight or
Press X to exit program.
-
```

1. In the folder you extracted the files, double click and run “Pertpole.exe”. Running this file for the first time will take you to the setup for Pertpole. Once this is done, you shouldn’t have to do it again. The program will take a moment to detect and initialize the device.

2. **Optional** - Pressing the B key to set your LCD backlight preference to either on or off. The default setting is backlight off. Your preference will be automatically saved for future runs.

3. If you are running POS.exe for the first time, you’ll have to configure it, double click and run on either POS.EXE or POSCONFIG.EXE and following the directions.

4. Double click and run POS.exe. As soon as you enter the opening register amount, you should see your Pertelian Pole Display come live and display the following:

```
WELCOME TO
  "Your register name"
TOTAL TAX      0.00
  TOTAL        0.00
```

5. You are set to go.

6. You should not ever have to go through these various setups again. **From now on, always remember to start the PERTPOLE.EXE program first and to leave it running while you are using the POS.EXE software.** Exit PERTPOLE.EXE only after you have closed the register. Make sure that these two programs are always run from the same folder.

Troubleshooting

1. If you download the installation software for the Pertelian display, and when you try to run the software, you receive an “NTST Error - The installer you are trying to use is corrupt or incomplete.” Then the probable difficulty is your virus scan software. Temporarily disable your virus scan software and download the installation file again.

Help

If you are having problems with getting your Pertelian Pole display to work, please make sure to visit our forums here: <http://pertelian.com/forums/index.php>. This forum acts as an evolving troubleshooting guide and is a direct contact to all ForeSight Systems members. If you have posted a question or issue there and have not received a response, please email alex@pertelian.com with your issue.

Pertelian is a trademark of ForeSight Systems LLC. All Rights Reserved. All users must accept the Pertelian License Agreement before running any Pertelian software. We proudly stand by the quality of our products. Please check our Product Limited Warranty Statement in our Policy Section at www.thepertelianstore.com or in the Contact Us section at www.pertelian.com. <http://pertelian.com/images/manufacturer%20warranty.pdf>